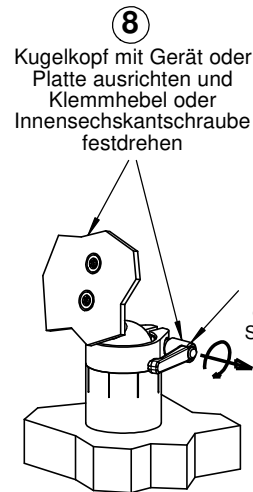
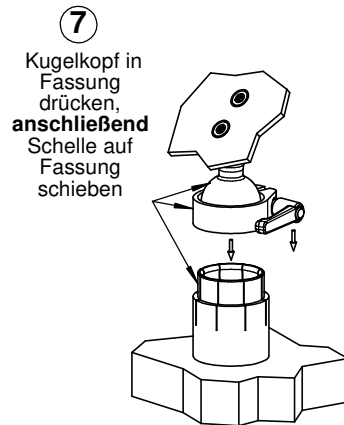
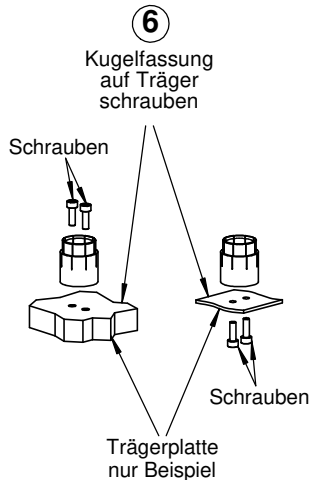
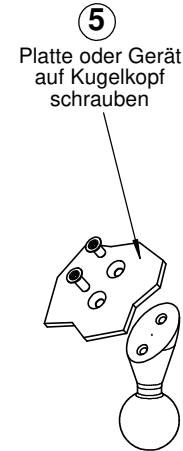
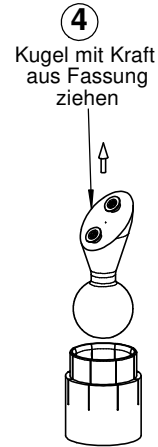
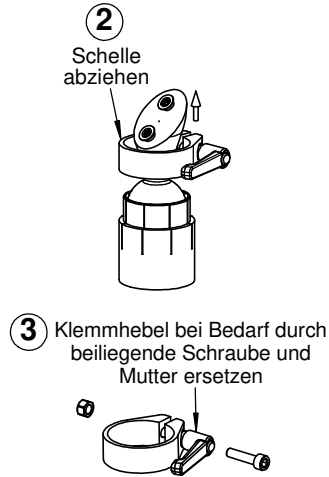
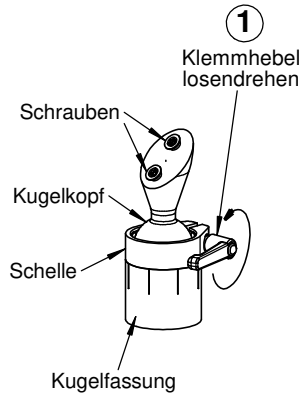


Montageanleitung



HERMANN
MECHATRONIK

Inh. Stefan Hermann
Prinz-Eugen-Str. 81
88069 Tettnang
Deutschland

www.hmqr.de

Technische Änderungen behalten
wir uns ohne Vorankündigung vor.
105867C / 190502

KGH G40 45° 2xM6 silbern

Art.-Nr.:
H4000